

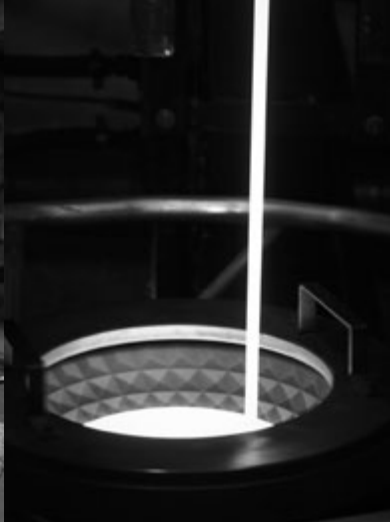
KOHLER®

Decorative Products



THE BOLD LOOK  
OF **KOHLER®**







# Life without labor is guilt. Labor without art is brutality.

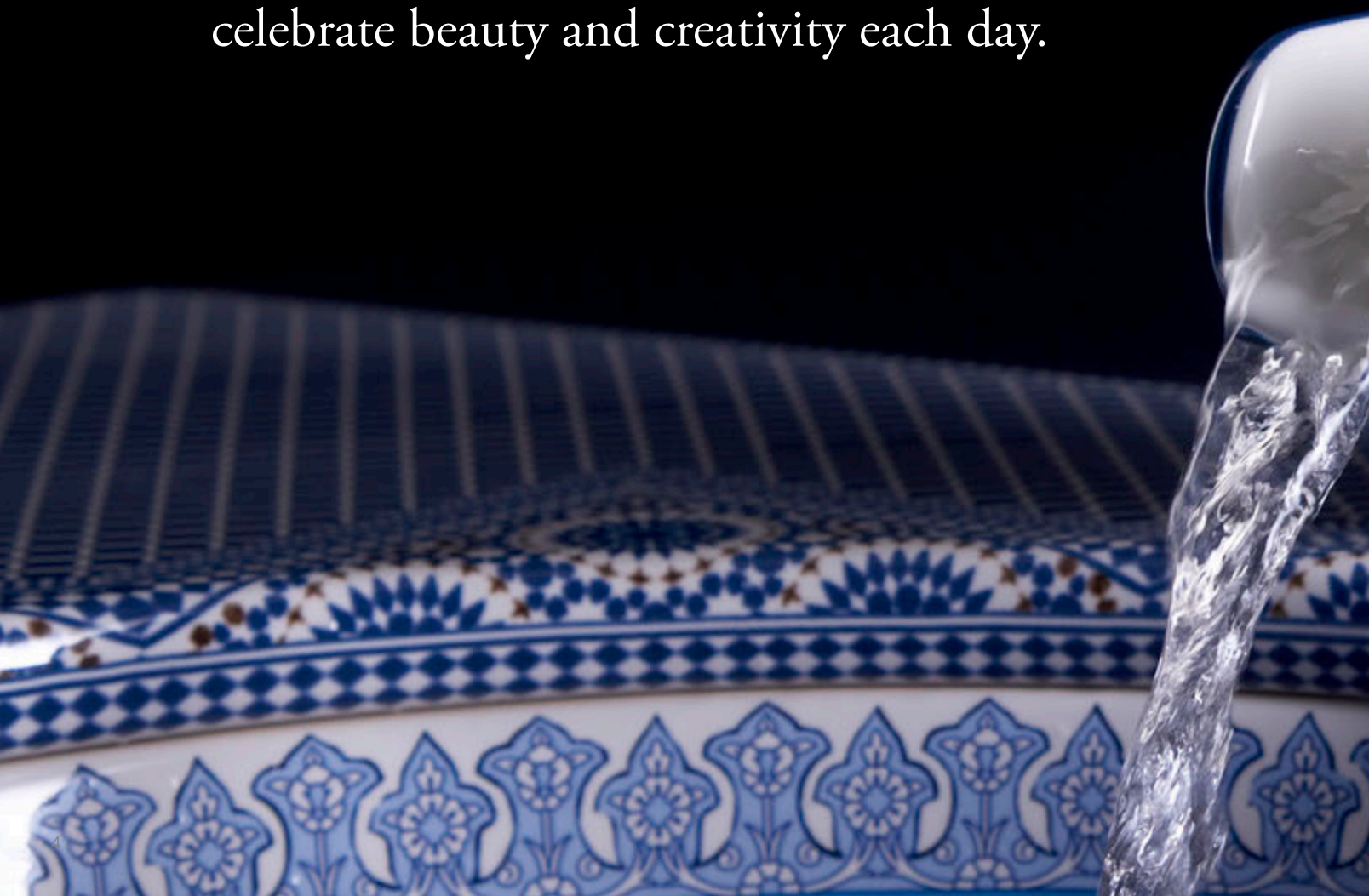
- John Ruskin

What John Michael Kohler saw in 1883 when he looked at a cast-iron horse trough was the bathtub that launched a global plumbing company. That pioneering spirit of ingenuity – the kind that sees a bathing revolution in a horse trough – has defined Kohler Co. from its earliest days. A visionary, John Michael Kohler understood the importance of innovative design and an uncompromising commitment to craft and quality. After four generations, we remain a family-owned company, with over 26,000 products and 13,000 patents to our name. Still leading the industry in innovation and quality. Bolder than ever.





Our experience of the world is shaped by the things we encounter every day. From the sideboard that holds our table linens to the juice glasses we use every morning, the objects we choose for our homes reflect who we are and narrate the rhythm and texture of our lives. Balancing artistry and craftsmanship with utility, KOHLER® decorative products invite you to celebrate beauty and creativity each day.





## Table of Contents

Art & Craft 6

Nature's Chemistry™

Glass 10

Bronze 24

Marble 30

Artist Editions

Floral 38

Subtle 50

Metallic 62

Global 70

Scenic 80

Faucets 86

Kitchen 94

Index 104



# Art & Craft

Functional works of art, Nature's Chemistry™ and Artist Editions products go beyond beautiful design. Handcrafted from the finest materials to be one of a kind, these products are as individual as you are. For the homeowner with an artistic sensibility, decorative products let you create a space that is truly your own.







Briolette™ Vessels Nature's Chemistry™ K-2373-B11





# Nature's Chemistry™

An organic, essential beauty is at the heart of Nature's Chemistry products. Our designs honor the integrity of natural materials – glass, bronze and marble – and accentuate their inherent elegance. Crafted by skilled artisans with methods that have been passed down for generations, these sinks connect us daily to the natural world.

## Glass

A substance that seems as visionary as it is rooted in daily life, glass has a versatile, fluid nature that lends itself to artistic expression. Cast, spun, slumped or pressed – our glass sinks are crafted by our own small team of artisans in Kohler, Wisconsin. With a precision that rivals watchmaking and a process that can take days, these glassmakers heat, pour and cool glass to capture the right form and texture, color and translucency, shaping basins that range from smooth and sculptural to intricate and patterned.

## Bronze

Widely used aboard ships because of its strength and resistance to salt water, bronze is a fitting choice for a bathroom sink. We work with highly skilled craftspeople to transfer each incredibly detailed pattern from mold to casting. Depending on the pattern's complexity, it may take days simply to fabricate the casting. Each sink is smoothed and polished to a burnished living finish that deepens with character over time. When the bronze patina has achieved exactly the look you want, a simple coat of wax will slow the color change.

## Marble

Carrara and Biancone marbles carry with them a sense of ancient architectural grandeur and exquisite artistry. We've chosen these iconic stones for our Botticelli® Vessels and Purist® Wading Pool® sinks because of their strength and beautiful coloring. We begin by hand-selecting quarried marble with a rich, subtle character that will come to life in the simplicity of our designs. Milled and hand-finished, each sink embodies a unique story of time and place. We strive to honor that history with unembellished forms and meticulous craftsmanship.





Facet® Vessels Nature's Chemistry™ K-2368-B11  
Purist® wall-mount sink faucet trim K-T14416-3-SN



## glass [glas]

– noun

an amorphous or non-crystalline substance formed by fusion.

Antilia® Wading Pool® 13

Briolette™ Vessels 14

Facet® Vessels 15

Kallos® 21

Lavinia® Vessels 16

Mirovia® Vessels 17

Pallene® Vessels 18

Runway® 22

Spun Glass® Vessels 19

Toric® Vessels 12

Tracery® 23

Whist® 20







## Toric® Vessels

Nature's Chemistry™

Above-counter sink

19<sup>7</sup>/<sub>8</sub>" x 19<sup>7</sup>/<sub>8</sub>" x 4<sup>5</sup>/<sub>8</sub>"

K-2371-B11



## Toric Vessels

K-2371-B11

Designed to showcase the raw and elemental qualities of glass, the Toric Vessels sink is impressive with its substantial presence and natural texture. Yet it balances this weight with a thinner, more transparent drain area and precise lines, creating a refined appearance. Toric showcases the beauty of glass with its crisp Ice color and handcrafted appearance.



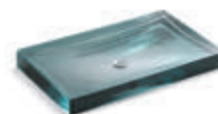
**Antilia® Wading Pool®**

Nature's Chemistry™

Above-counter sink

28<sup>1</sup>/<sub>16</sub>" x 17<sup>1</sup>/<sub>16</sub>" x 2<sup>3</sup>/<sub>4</sub>"

K-2369-B11



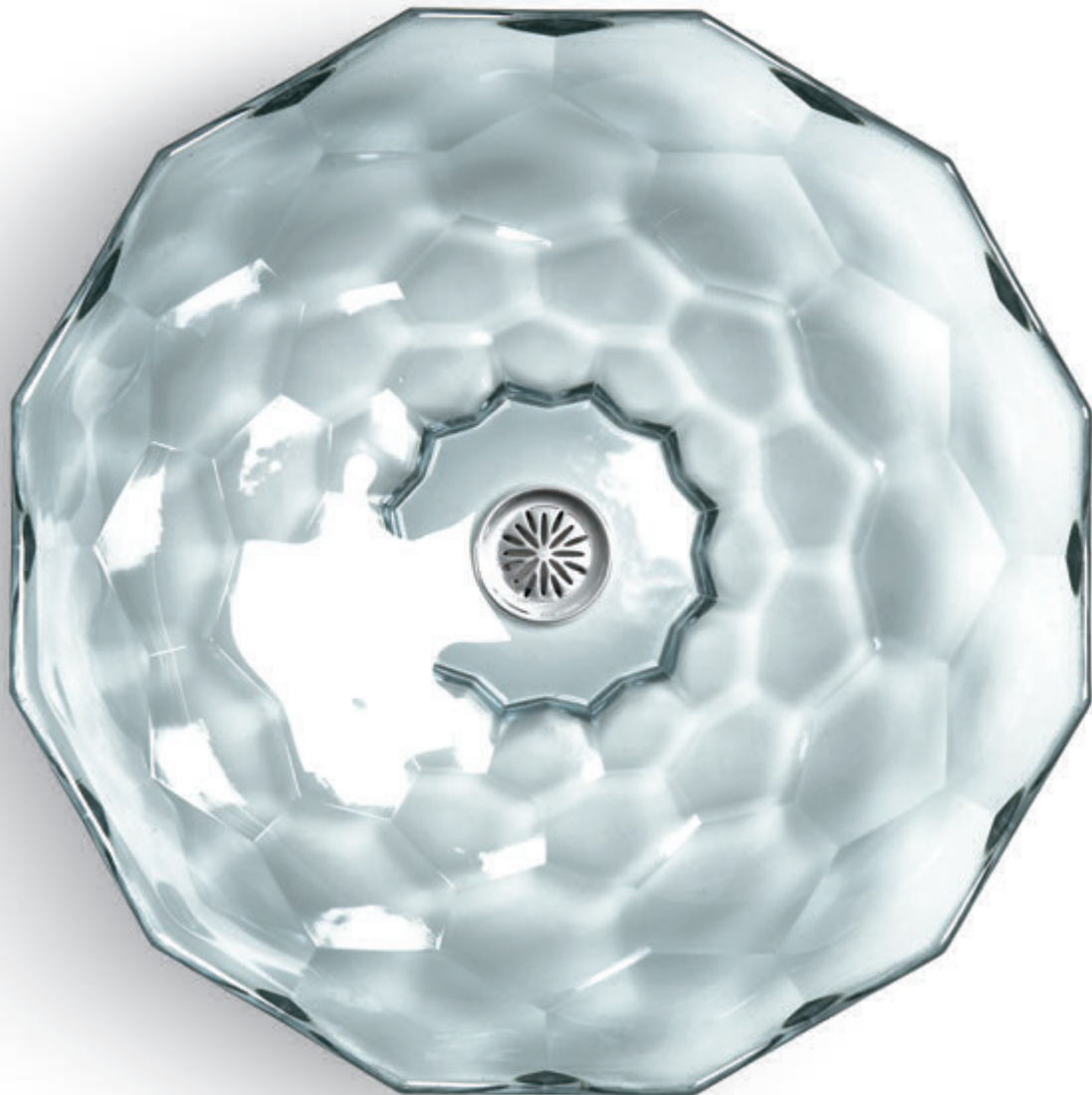
## Antilia Wading Pool

K-2369-B11

The legendary island Antilia was said to have been discovered – in the Atlantic Ocean off the coast of Portugal – by people fleeing Hispania in 734. Today, cartographers know no such island exists, but its intrigue remains. By bestowing this name on the Antilia Wading Pool sink, Kohler celebrates the sense of allure found throughout nature. Slightly curved edges and a subtle, rippled texture convey both the substantial force of nature and its shifting fluidity.



**Briolette™ Vessels**  
Nature's Chemistry™  
Above-counter sink  
17½" diameter x 4¾"  
K-2373-B11



## Briolette Vessels

K-2373-B11

From its roots in ancient India to its discovery by European royals, the briolette – an oval or pear-shaped gemstone cut in triangular facets – remains one of the most distinctive gemstone cuts. Its popularity reemerged during the Victorian era and the Art Deco period, and today the Briolette Vessels glass sink builds on the tradition. With its uniquely faceted shape, Briolette creates a striking, reflective effect with delicately textured glass.



**Facet® Vessels**  
Nature's Chemistry™  
Above-counter sink  
19" diameter x 4¾"  
K-2368-B11



## Facet Vessels

K-2368-B11

Facet can denote a surface, as on a cut gem, or an object of contemplation. The Facet Vessels sink reflects nuances of both as the eye-catching centerpiece of any bathroom. With its distinctive triangular base, Facet presents an exciting juxtaposition to the traditional funnel shape of spun glass sinks.



**Lavinia® Vessels**  
Nature's Chemistry™  
Above-counter sink  
19" diameter x 3 7/8"  
K-2367-B11



## Lavinia Vessels

K-2367-B11

Artisans have used glass for more than five millennia, and today this material remains an essential element in our homes and our art. The Lavinia Vessels spun glass sink marries form and function to celebrate this time-honored craft, capturing the raw perfection of nature. Its organic funnel shape and slender, refined walls provide a showcase for the interplay of light and water.



**Mirovia® Vessels**  
Nature's Chemistry™  
Above-counter sink  
18<sup>7</sup>/<sub>8</sub>" diameter x 4<sup>1</sup>/<sub>16</sub>"  
K-2370-B11



K-2370-B11

## Mirovia Vessels

---

According to geologists, billions of years ago a superocean named Mirovia surrounded Earth's supercontinent. It's a powerful image: such a colossal surface of water. And it's the perfect name for a glass sink that celebrates water's imposing presence. Simple and austere, the Mirovia Vessels sink has a subtle texture that mimics the ripple effect of the water's surface.



**Pallene® Vessels**

Nature's Chemistry™

Above-counter sink

18 $\frac{7}{8}$ " diameter x 4 $\frac{1}{16}$ "

K-14016-B11



## Pallene Vessels

K-14016-B11

Named for one of the seven beautiful daughters of the giant Alkyoneus in Greek mythology, the Pallene Vessels sink displays an intricate, classically inspired pattern embossed on its exterior. The smooth surface of the sink's interior lets water flow gracefully over this fine detailing for a strong visual appeal.



### Spun Glass® Vessels

Nature's Chemistry™

Above-counter sink

17½" diameter x 6"

K-2276-B11



K-2276-B11

## Spun Glass Vessels

---

Harking back to long-ago mornings when a splash of cold water from the washbasin was enough to awaken anyone, the Spun Glass Vessels sink blends nostalgic charm with practicality and style. Its translucent, soda lime glass provides a unique, handcrafted look as inviting as a calm, clear pond.



## Whist®

Nature's Chemistry™

Under-mount sink

19" x 16<sup>1</sup>/<sub>8</sub>" x 5<sup>3</sup>/<sub>8</sub>"

K-2741-B11-G2



K-2741-B11



K-2741-B11-G1



K-2741-B11-G2



K-2741-B11-G3

## Whist

Quiet. Silent. The definition behind this sink's name evokes a peacefulness coveted in our busy lifestyles. And the design of the Whist sink, combining color with a muted texture, delivers that sense of tranquility. A concentric line pattern in the basin gives the feeling of gentle ripples on the surface of a pond as if a gentle flow of water were captured and preserved in time.



**Kallos®**  
Nature's Chemistry™  
Under-mount sink  
16" diameter x 5 1/8"  
K-2361-B11



K-2361-B11

## Kallos

Named for the Greek word meaning beauty or grace, the Kallos sink draws on the rich tradition of ancient artistry. Its detailed architectural pattern recalls the coffered dome of Rome's ancient Pantheon, delicately expressed in spun glass. The fine-cut glass design conceals items stored beneath the sink, while reflecting light and color in captivating patterns.



**Runway®**  
Nature's Chemistry™  
Vanity-top sink  
31<sup>1</sup>/<sub>8</sub>" x 22<sup>1</sup>/<sub>8</sub>" x 5<sup>7</sup>/<sub>16</sub>"  
K-2372-Y1



## Runway

---

While it can't actually strut down the catwalk, the Runway glass sink has the glamour and confidence to capture the camera's attention. This vanity-top sink features a rich, dark Raven finish for a look that's sure to get noticed. Crafted of sleek, shiny glass, Runway reflects its surrounding environment and unifies your design aesthetic.



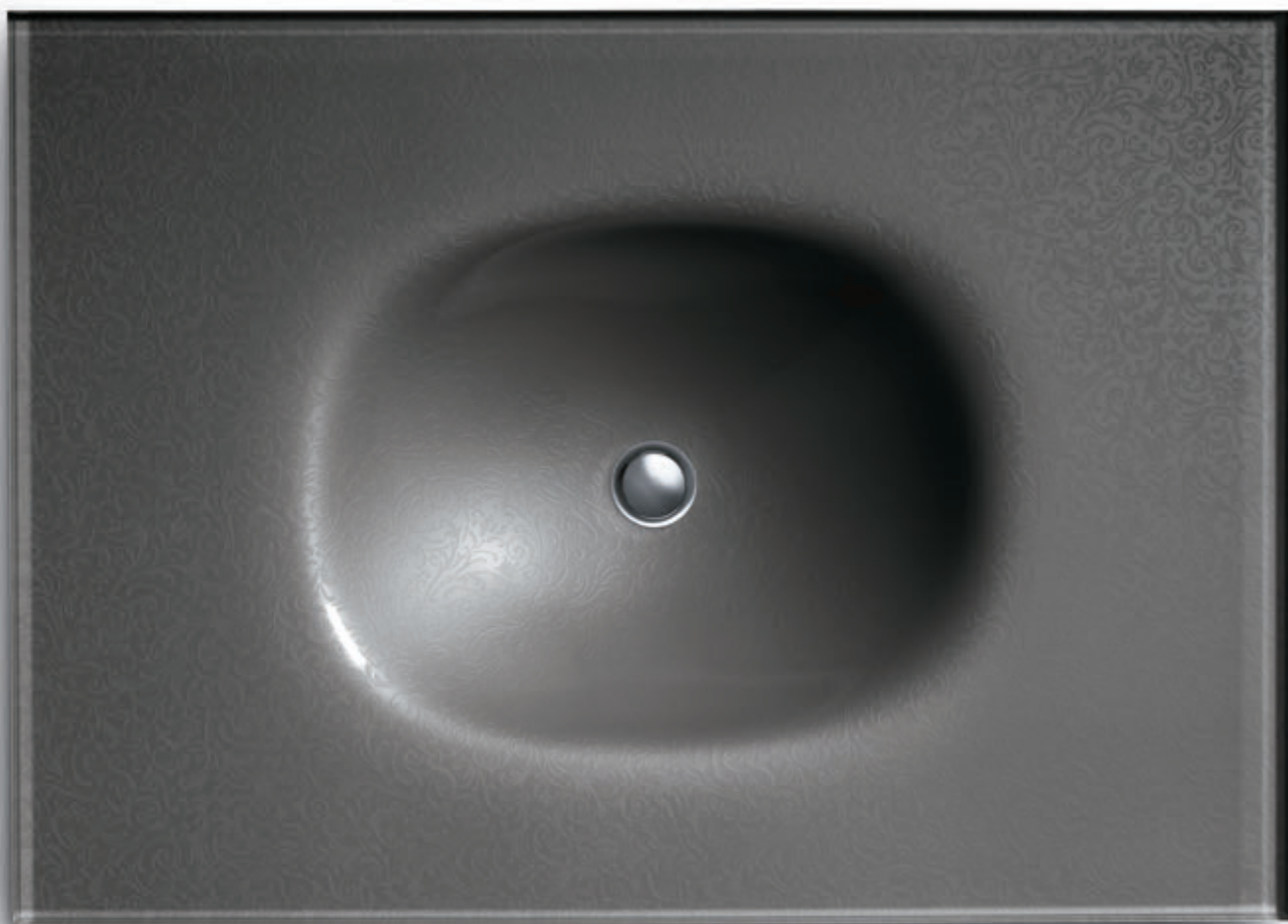
**Tracery®**

Nature's Chemistry™

Vanity-top sink

31<sup>1</sup>/<sub>8</sub>" x 22<sup>1</sup>/<sub>8</sub>" x 5<sup>7</sup>/<sub>16</sub>"

K-14017-YM



## Tracery

---

Named for the stonework elements that support glass in a Gothic window, the Tracery glass sink features a delicate scroll pattern floating just beneath the smooth, glossy surface. This vanity-top sink is crafted with the slumped glass technique, which allows gravity to give shape using the weight of the glass itself – resulting in a gracefully contoured sink.





# bronze [bränz]

– noun

a metal alloy composed primarily  
of copper and some tin.

Kamala® Vessels 26

Katagami™ Wading Pool® 27

Lilies Lore® 28







**Kamala® Vessels**

Nature's Chemistry™

Above-counter sink

19<sup>13</sup>/<sub>16</sub>" diameter x 7<sup>7</sup>/<sub>8</sub>"

K-14281-TF



## Kamala Vessels

K-14281-TF

Kamala names both a Southeast Asian tree and the orange-red dye made from its seeds' powdery coating. The Kamala Vessels cast-bronze sink evokes the tropical climate where this sought-after medicinal tree grows. Its low-relief pattern of dots, ridges, scrolls and links draws inspiration from patterns created two millennia ago by the Dong Son and others who used a lost-wax casting technique to craft intricate rain drums.



**Katagami™ Wading Pool®**

Nature's Chemistry™

Above-counter sink

20½" x 16⅞" x 3⅞"

K-14015-DP1



## Katagami Wading Pool

K-14015-DP1

The Japanese art of printing kimonos with intricate stencils, katagami involves making extremely fragile cuts on washi paper. This incredible attention to detail – and the beautiful patterns created by it – inspired the Katagami Wading Pool sink. Cast in bronze and finished to a warm, dark patina, Katagami highlights the movement of water. The shallow texture from the floral design creates unique water patterns while the distinctive, elevated drain cover allows water to visually disappear into the sink. The cast bronze will patina over time, deepening the rich color.



**Lilies Lore®**  
Nature's Chemistry™  
Under-mount sink  
17<sup>5</sup>/<sub>16</sub>" x 14<sup>5</sup>/<sub>16</sub>" x 5<sup>1</sup>/<sub>8</sub>"  
K-14297-MP1



## Lilies Lore

---

Originating centuries ago in Greece, Africa, Mesopotamia and Asia, bronze casting has been associated with classical, Renaissance and even contemporary art. Breathing new life into an old-world material, the cast-bronze Lilies Lore sink takes on a modern shape through an organic and intricate pattern. Its low-profile texture moves beyond traditional feminine representations of lilies for a fresh approach. A living finish, the cast bronze will patina over time to enhance the sink's beauty.





Lilies Lore® Nature's Chemistry™ K-14297-MP1  
Margaux® single-handle sink faucet K-16230-4-BV



# **marble** ['märbəl]

– noun

a metamorphic rock that occurs in a wide range of colors and variegations and is frequently used in architecture and sculpture.

Botticelli® Vessels 34

Purist® Wading Pool® 32

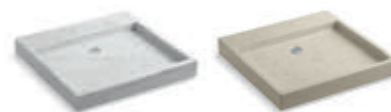
Purist Wading Pool Wet Surface 33







**Purist® Wading Pool®**  
Nature's Chemistry™  
Above-counter/wall-mount sink  
24" x 23½" x 3"  
K-2335-WH



## Purist Wading Pool

K-2335-WH

K-2335-B8

Imagine a centuries-old wading pool that beckons children in a quaint European town. Such a place, where water soothes and delights, inspired the Purist Wading Pool sink. Crafted from Biancone or White Carrara marble, this sink creates a quiet backdrop for the simplicity of water with its smooth, shallow design.



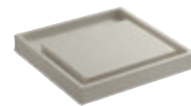
**Purist® Wading Pool® Wet Surface**

Nature's Chemistry™

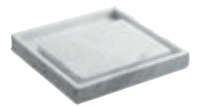
Above-counter/wall-mount sink

24" x 23½" x 3"

K-2334-B8



K-2334-B8



K-2334-WH

## Purist Wading Pool Wet Surface

With its unique wet surface design, this Purist Wading Pool sink presents water as something to be admired and contemplated – not as something to be instantly swept away. It's an eye-catching approach that elevates water to art, showcasing it on the appropriately stunning backdrop of Biancone or White Carrara marble.



**Botticelli® Vessels**  
Nature's Chemistry™  
Above-counter sink  
22" diameter x 5½"  
K-2333-WH



K-2333-WH

K-2333-1-WH

## Botticelli Vessels

One of the most distinct painters of the Renaissance, Sandro Botticelli – best known for *The Birth of Venus* and *Primavera* – brought movement and rhythm to his paintings with his unique outlining style. The Botticelli Vessels sink builds on his study of robust forms with its thick, expansive rolled rim. Hand-formed from a single piece of Carrara marble for exceptional beauty and strength, Botticelli brings sculptural drama to your bathroom. Choose from a simple, sleek basin or a larger basin with an integral faucet deck.





Botticelli® Vessels Nature's Chemistry™ K-2333-WH  
Purist® wall-mount sink faucet trim K-T14417-3-BN



# Artist Editions

Each of our Artist Editions designs begins with intensive research. We study patterns and color palettes drawn from cultures and landscapes around the world – architecture, textiles, gardenscapes, craftwork, art and design. Fresh, elegant interpretations of these patterns are painstakingly applied by hand to our fixtures and fired for exceptional durability.

## Patterns

Based on centuries-old methods used to create fine china such as Wedgwood, we work with the leading transferware manufacturers in the world to turn our artists' sketches into multicolored, multilayered patterns. With meticulous precision, each pattern is hand-applied before the fixtures are fired to perfection in our custom kilns.

## Metals

Adorning things we value with precious metals is a tradition long practiced in many cultures. Gold and platinum, in particular, have ornamented fine dinnerware for centuries. We've extended this practice to several Artist Editions designs, layering gold and platinum into complex patterns for an added sense of formality and sophistication. Metallic patterns are hand-applied and kiln-fired for durability.

## Textures

Textured patterns begin with meticulously carved, in most cases hand-chiseled, plaster molds. From these, we create working molds that produce ceramic sink castings ready to be glazed and fired. To accentuate the details of the relief pattern, we use a translucent glaze. The result is a unique visual and tactile experience. Color pools and deepens where the pattern dips and is softer where the pattern rises. Every nuance comes to life.



*Artist Editions*  
K O H L E R





Caravan® collection Nepal Artist Editions K-14223-SR1-K7  
Purist® single-handle sink faucet K-14404-4A-CP



# floral ['flôrəl]

– adjective

pertaining to, consisting of or depicting flowers.

Botanical Study™ 46

Briar Rose 44

Crimson Topaz 42

English Trellis 49

Fables & Flowers™ 43

Garden Bandana™ 47

Peonies & Ivy™ 40

Prairie Flowers™ 41

Soliloquy™ 48

Tale of Briar Rose 45









**Peonies & Ivy™**  
Artist Editions  
Drop-in sink  
25¼" x 17" x 9¼"  
K-14270-PS-96



K-260-PS-96



K-14390-PS-96



K-14012-PS-96



K-14239-PS-96

## Peonies & Ivy

Escape to afternoon tea in the garden, and linger as you enjoy the long summer day. It's a moment captured by the Peonies & Ivy collection, inspired by the resurgence of traditional Victorian floral imagery in current American decorating and gardening. Full, bright peony blossoms intertwined with green ivy transport you to fresh air and inviting gardens.



## Prairie Flowers™

Artist Editions

Drop-in sink

25¼" x 17" x 9¼"

K-14271-WF-96



K-14207-WF-96



K-14181-WF-96



K-260-WF-96



K-14218-WF-96



K-14269-WF-96



K-14345-WF-96

## Prairie Flowers

“Our ability to perceive quality in nature begins, as in art, with the pretty. It expands through successive stages of the beautiful to values as yet uncaptured by the language.” This quote from early 20th-century naturalist Aldo Leopold adorns the Prairie Flowers collection, transporting you to an untouched prairie where grass reaches high and flowers bloom with abandon. Prairie Flowers draws design inspiration from 18th-century dinnerware crafted for Catherine the Great of Russia.



**Crimson Topaz**  
 Artist Editions  
 Drop-in sink  
 22¾" x 18" x 8¾"  
 K-14229-TC-0



K-260-TC-0



K-14218-TC-0



K-14226-TC-0



K-14231-TC-0

## Crimson Topaz

The morning sun illuminates a brilliant passionflower. It's a moment of quiet in a rich tropical forest come to life on Crimson Topaz – a collection inspired by 18th-century botanical drawings. Bright passionflowers intertwined with leaves and vines in shades of green and red – surrounded by a light mocha scroll pattern – bring joyful color to the bathroom.



## Fables & Flowers™

Artist Editions

Drop-in sink

25¼" x 17" x 9¼"

K-14173-0



K-14200-TP-0



K-260-TL-0



K-14193-0

## Fables & Flowers

“Once upon a time, a youth was enamored of a beautiful girl ...” So begins the legend of the tulip, which encircles the Fables & Flowers sink in a flowing script. Brightly hued tulips, in a pleasing contrast to the crackled White background, burst forth with a realism drawn from 17th-century English botanical drawings. The rich pink, green and brown tones bring a fresh optimism to your décor.



**Briar Rose**  
 Artist Editions  
 Drop-in sink  
 24" x 15" x 8¼"  
 K-14272-BR-96



K-14203-BR-96



K-14317-BR-96



K-260-BR-96



K-14218-BR-96



K-14239-BR-96

## Briar Rose

*Little Briar Rose* – the classic folk tale published by the Brothers Grimm in 1812 – tells the story of a young princess cursed to sleep for 100 years until awoken by a prince's kiss. In the story, the prince climbs through a thick bramble of climbing roses enveloping the castle to reach his Sleeping Beauty. This imagery inspired Briar Rose, a pattern of English roses in soft pink, green and brown on a Biscuit background.



## Tale of Briar Rose

Artist Editions

Drop-in sink

25" x 17" x 9"

K-14274-BR-96



## Tale of Briar Rose

---

The Tale of Briar Rose pattern offers a more detailed expression of the Sleeping Beauty folk tale. Told in 18th-century illuminated manuscript style, it depicts nine scenes and verses from the classic story, framed by a bramble of roses. Featured on the Centerpiece® drop-in sink, the Tale of Briar Rose pattern pairs well with Briar Rose products and captures the whimsical romance of this beloved fairy tale.



## Botanical Study™

Artist Editions

Under-mount sink

19¾" x 15⅝" x 6¾"

K-14275-BT-0



K-14036-BT-0



K-14218-BT-0



K-14272-BT-0



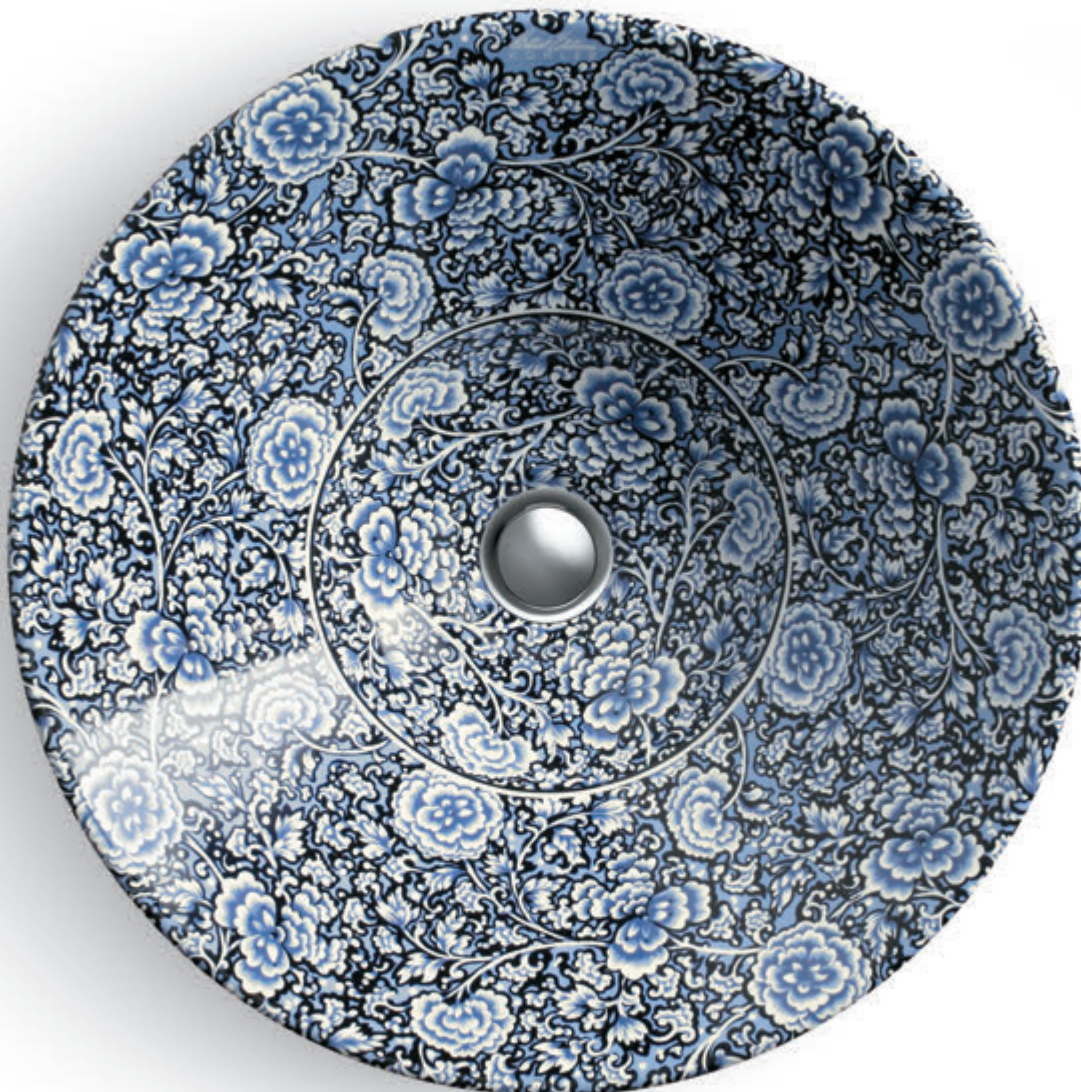
K-14223-BT-0

## Botanical Study

The crisp lines of a leaf. The soft blossom of a flower. Botany has captivated artisans around the world since the earliest times. Botanical Study draws on the rich tradition of botanical art, including the 16th-century Turkish floral designs that graced pottery, rugs and henna body art and 17th- and 18th-century European botanical studies. Intricate graphite tulips and chrysanthemums gently entwine as a butterfly flutters nearby, presenting a graceful portrayal of nature.



**Garden Bandana™**  
Artist Editions  
Above-counter sink  
16¼" diameter x 6⅜"  
K-14223-GB-96



## Garden Bandana

K-14223-GB-96

Based on the pattern of a 16th-century porcelain dish from China's Qing dynasty – a dish that regained popularity in 19th-century America – Garden Bandana features a pattern of blue chrysanthemums, peonies and foliage in reverse on a Biscuit background. Inspired by centuries-old design, Garden Bandana feels remarkably contemporary.



**Soliloquy™**  
Artist Editions  
Drop-in sink  
24" x 15" x 8¼"  
K-14272-LY-0



K-14272-LY-0



K-14218-LY-0

## Soliloquy

Striking in its simplicity, Soliloquy features a beautiful moth orchid stretching gracefully across a White background. This Asian-influenced design brings a fresh look to an array of décors: serene in a cozy cottage setting or remarkably Zen in a modern environment. Blooming in passionate, purple-red tones, the orchid evokes a quiet strength with its understated presence.



**English Trellis**  
 Artist Editions  
 Drop-in sink  
 22 $\frac{5}{8}$ " x 18 $\frac{7}{8}$ " x 8 $\frac{7}{8}$ "  
 K-14176-FL-0



K-14207-FL-0



K-14181-FL-0



K-14317-FL-0



K-260-FL-0



K-14195-FL-0



K-14245-FL-0



K-14192-FL-0



K-14261-FL-0

## English Trellis

In the early 17th century, Europeans revered intricate woodblock-printed, -painted or -stained calico pieces, known as chintz, handcrafted in India. While it took European artists another century to learn the craft, they built on the rich tradition, adding their own interpretations of floral patterns. Inspired by this legacy, English Trellis presents delicate stems gracefully arching – as a vine climbs a garden trellis.



## **subtle** ['sətl]

– adjective

fine or delicate in meaning or intent;  
not easily understood or perceived.

Bouclé Muslin<sup>TM</sup> 52

Bouclé Tweed<sup>TM</sup> 53

Garland<sup>TM</sup> 60

Ricochet<sup>®</sup> 58

Tableau<sup>®</sup> 61

Tog & Thel<sup>TM</sup> 56

Turnings<sup>®</sup> Vessels 57

Twirl<sup>®</sup> 59

Water's Grove<sup>TM</sup> 55

Water Lilies<sup>TM</sup> 54







**Bouclé Muslin™**

Artist Editions

Drop-in sink

21" x 20⅞" x 6⅞"

K-2282-HW



K-2349-HW



K-2200-HW

## Bouclé™ Muslin

A thick, wool blanket. A cabled fisherman's sweater. Hand-weaving has been a part of our families – and defined our cultures – for generations. Bouclé builds on this rich tradition, bringing the subtle texture and color variations of fiber to a smooth sink surface. Bouclé Muslin combines White and Almond to create a light-colored pattern.



**Bouclé Tweed™**

Artist Editions

Above-counter sink

16¼" diameter x 6⅝"

K-2200-HV



K-2349-HV



K-2282-HV

## Bouclé™ Tweed

Capturing the textural complexities of hand-weaving, Bouclé offers a unique surface enhancement that creates a neutral, visual texture. It's a nod to the rich tradition of turning fiber into wearables and household essentials – and the perfect way to bring an element of color and texture to the bathroom without overwhelming. Bouclé Tweed combines Thunder™ Grey and Almond to create a warm, dark-colored pattern.



**Water Lilies™**  
Artist Editions  
Drop-in sink  
21" x 20<sup>7</sup>/<sub>8</sub>" x 6<sup>7</sup>/<sub>8</sub>"  
K-14282-W2



White (0)

## Water Lilies

---

Inspired by the graceful motifs of Art Nouveau, the Water Lilies sink features a circular shape that provides strength and purity in design. Controlled yet sensuous lines and curvilinear style come to life in a fluid, intricate arrangement of lily pads and flowers, with low-relief carving that enhances the variation of the glaze to give the sink a handcrafted look.



**Water's Grove™**

Artist Editions

Above-counter sink

16¼" diameter x 6⅞"

K-14222-WG-0



Earthen White (W2)



Translucent  
Cashmere™ (K5)

## Water's Grove

---

Reminiscent of handcrafted dimensional pottery from the American Arts & Crafts era near the turn of the 19th century, the Water's Grove Vessels sink features a low-relief floral pattern of clematis, hibiscus and Lenten roses. Artisans of the movement were passionately committed to creating art by hand with intricate detail, and Water's Grove honors this tradition. Water's Grove is finished with a glaze that gives the relief a highlighted appearance.



**Tog & Thel™**  
Artist Editions  
Under-mount sink  
16<sup>1</sup>/<sub>8</sub>" x 15<sup>1</sup>/<sub>8</sub>" x 6<sup>7</sup>/<sub>8</sub>"  
K-14046-KB



K-14046-KB



K-14032-KB/K-14046-KB

## Tog & Thel

Taking its inspiration from the coordinating and authentic grace of traditional woven garments, Tog & Thel is named for the outer and inner coats of Icelandic wool. The two patterns that decorate the vanity top and sink weave themselves together seamlessly for a subtle and sophisticated look.



**Turnings® Vessels**  
Artist Editions  
Above-counter sink  
16¼" diameter x 6⅞"  
K-2191-HW1



## Turnings Vessels

As the potter's wheel turns, soft, wet clay takes shape in the potter's hands. It's an age-old craft begun more than five millennia ago, and the uniqueness of handmade pottery still captivates art collectors today. The Turnings Vessels sink honors this tradition with its delicate ripple pattern – a distinctive aesthetic that reflects a potter's throwing marks.



**Ricochet®**

Artist Editions

Under-mount sink

19 $\frac{3}{8}$ " x 16 $\frac{3}{8}$ " x 7 $\frac{1}{4}$ "

K-14280-C5-0



Earthen White (W2)



Translucent  
Cashmere™ (K5)

## Ricochet

---

A random glance quickly turns into a mesmerizing distraction. It's the power of the Ricochet sink, with its delicate scalloping pattern and translucent glaze. This contemporary sink creates an optical illusion, pulling you in and inviting you to get lost in its visual depth. Paired with a marble countertop, Ricochet delivers intriguing complexity.



**Twirl®**

Artist Editions

Under-mount sink

16 $\frac{1}{8}$ " diameter x 6 $\frac{7}{8}$ "

K-14287-H6-0

**Twirl**

Earthen White (W2)

Translucent  
Cashmere™ (K5)

As a clay pot spins, the potter gently holds a stick to its surface. It's a slight movement with a big impact: drawing a continuous line throughout the pot's surface. And it's a playful, curious act that has captivated myriad potters across an array of cultures. The Twirl sink displays this love of material and craftsmanship with concentric striations and a rich finish.



**Garland™**  
Artist Editions  
Drop-in sink  
24" x 15" x 8¼"  
K-14156-0



K-14273-G



White (0)



Biscuit (96)



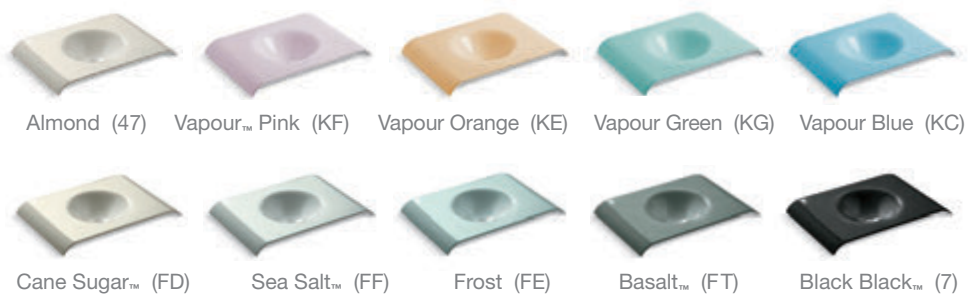
Sandbar (G9)

## Garland

An early summer breeze blows off the Mediterranean, bringing movement to an expansive field of wildflowers. Basket in hand, a young girl gathers fresh blooms for her mother. It's a peaceful image and the calming atmosphere created by the Garland sink. The sink's overall pattern of acanthus leaves mimics a popular design motif used on fabrics, on wall coverings and as an architectural element during the Victorian era.



**Tableau®**  
Artist Editions  
Wall-mount/above-counter sink  
27" x 19" x 4¼"  
K-14293-0



## Tableau

Mimicking an open book ready to unveil a story, the Tableau sink delivers its powerful visual impact without a hint of reserve. Crafted of KOHLER® Enameled Cast Iron with a deep, glossy finish, Tableau reflects a fluidity that's formed by the interplay of light, shape and surface texture.



## **metallic** [mə'talik]

– adjective

made of, consisting of or related to metal.

Empress Bouquet™ 64

Flight of Fancy™ 66

Laureate™ 67

Mille Fleurs™ 65

Saree™ 68







## Empress Bouquet™

Artist Editions

Above-counter sink

16¼" diameter x 6⅞"

K-14223-SMC-0



K-14275-SMC-0

K-14273-SMC-0

K-14223-SMC-0

K-14338-SMC-0

## Empress Bouquet

The first people to develop printmaking, the Chinese have produced exceptional woodblock prints since the 9th century. Offering a modern interpretation of 18th-century Chinese print work, Empress Bouquet builds on this rich artistry with its floral motif and brilliant gold and metallic detailing. Each sink showcases a slightly different variation on the pattern, creating a one-of-a-kind piece.



## Mille Fleurs™

Artist Editions

Under-mount sink

16 $\frac{1}{8}$ " diameter x 6 $\frac{7}{8}$ "

K-14036-T9-47



K-14275-T9-47



K-14218-T9-47



K-14272-T9-47



K-14223-T9-47

## Mille Fleurs

Inspired by old-world folk art, especially embroidery, rosemaling and tapestries, Mille Fleurs brings us back to a time when wares were crafted by hand – and meant to be both well used and treasured. With its blossom-laden branches and birds of flight, Mille Fleurs brings an understated elegance to the bathroom. Genuine platinum and gold accent the design, which covers the entire surface, lending a sense of luxury.



**Flight of Fancy™**  
Artist Editions  
Under-mount sink  
19¼" x 16⅞" x 8¼"  
K-14218-FG-0



Gold (FG)



Platinum (FP)

## Flight of Fancy

---

Refined craftsmanship and intricate china patterns have held a place of honor in the dining room for centuries. Kohler brings this graceful look to the bathroom with Flight of Fancy. Featuring intricate, raised-enamel floral detailing framed by thin bands of rich Gold or Platinum, Flight of Fancy makes a stunning formal statement.



**Laureate™**  
Artist Editions  
Under-mount sink  
19¼" x 16¼" x 7½"  
K-14174-PD-0



## Laureate

K-14203-PD-0

K-14181-PD-0

K-14317-PD-0

K-14174-PD-0

K-14346-PD-0

The rich, warm glow of Polished Gold. The bright, reflective glint of Polished Platinum. With your choice of finishes, the courtly Laureate brings refined elegance to the bathroom. Laureate combines acanthus leaves with a metalwork style used by the Ottoman Turks throughout the 18th century in embossed fabrics and as an architectural detail. Here the garland floral texture and White china create an eye-catching juxtaposition.



**Saree™**

Artist Editions

Under-mount sink

19 $\frac{3}{4}$ " x 15 $\frac{5}{8}$ " x 6 $\frac{3}{4}$ "

K-14265-S1-96



K-14260-S1-96



K-14218-S1-96



K-14268-S1-96

## Saree

The late 19th-century American decorative arts, which celebrated handcrafted and hand-finished items, brought highly pictorial scenes to ceramic ware. Saree sinks and the matching Saree toilet honor this movement with intricate gold patterning. The embellishment creates a shimmering elegance ideal for a formal bathroom.





**Mille Fleurs™** Artist Editions K-14036-T9-47  
**Purist®** widespread sink faucet K-14406-4-BGD



# global ['glōbəl]

– adjective

pertaining to or involving the entire world.

Imperial Blue™ 74

Maharani™ 76

Marrakesh™ 75

Nepal 73

Persia 72

Serpentine Bronze™ 78

Take Wing™ 77







## Persia

Artist Editions

Above-counter sink

16¼" diameter x 6⅝"

K-14223-SR2-0



K-14218-SR2-0



K-14223-SR2-0

## Persia

Influenced by one of the oldest continuous civilizations, the Caravan® collection Persia design reflects a rich tradition of culture and art. An eye-catching classic, Persia offers a fresh interpretation of Middle Eastern and Indian design traditions, drawing inspiration from decorative architecture and Moorish style. Organic, open line work contrasted with geometric patterns creates a unique juxtaposition and richness with gold and platinum micas. The White background creates an effective canvas for the pattern while offering ease of coordination with other fixtures in the space.



## Nepal

Artist Editions

Above-counter sink

16¼" diameter x 6⅞"

K-14223-SR1-K7



K-14218-SR1-K7



K-14223-SR1-K7

## Nepal

With a calming, Translucent Blue base and a contemplative pattern, the Caravan® collection Nepal design transforms daily routines into moments of reflection. Inspired by East Indian traditions, Nepal draws upon henna ceremonies and textile techniques. With delicate detailing and soft shifts in hue and finish, Nepal is ideal for the person desiring a peaceful escape.



**Imperial Blue™**  
 Artist Editions  
 Under-mount sink  
 19¼" x 16⅞" x 8¼"  
 K-14218-VB-0



## Imperial Blue

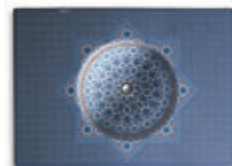
With intricate detail, a serpentine dragon encircles the bowl of this sink, tail in hand to form a curvaceous loop. Typical of the Yung-lo reign of the Ming dynasty but later copied by imperial artisans, the blue-and-white floral pattern and dragon portray traditional strength and wisdom. Imperial Blue draws inspiration from a porcelain vase created during this period.



**Marrakesh™**  
Artist Editions  
Under-mount sink  
16 $\frac{1}{8}$ " x 15 $\frac{1}{8}$ " x 6 $\frac{7}{8}$ "  
K-14046-BU-96



K-14046-BU-96



K-14033-BU-96/K-14046-BU-96



K-11000-BU-96

## Marrakesh

Named for the ancient capital of Morocco, the Marrakesh design was inspired by Moorish architecture. Marrakesh, the city, once served as a stop along a major trade route to the famous Timbuktu. The Marrakesh vanity top draws inspiration from mosaics found in quaint Moroccan courtyards, while the intricate and abstract floral pattern embellishing the sink is inspired by artwork found in mosques.



## Maharani™

Artist Editions

Under-mount sink

16 $\frac{1}{8}$ " x 15 $\frac{1}{8}$ " x 6 $\frac{7}{8}$ "

K-14046-JB-96



K-14046-JB-96



K-11000-JB-96

## Maharani

Maharani is the feminine form of the Indian word *maharaja* and refers to a woman of power – an empress, princess or queen. Inspired by Indian culture, the Maharani sink and matching faucet are decorated with a special technique that creates raised ruby-like flowers and 24-carat gold tendrils.



**Take Wing™**

Artist Editions

Under-mount sink

19¼" x 16⅞" x 8¼"

K-14218-T4



Sepia (T4)



Indigo (T5)

## Take Wing

From India and West Africa to Indonesia and Southeast Asia, the art of batik has captivated people for centuries with its rich and varied colors and patterns. Take Wing draws on the handmade beauty of this cloth-dying technique, with rich Sepia or Indigo hues chosen to complement organic materials. Take Wing depicts butterflies formed from paisley patterns converging around a central chrysalis. A single butterfly taking flight symbolizes the individuality present in nature.



## Serpentine Bronze™

Artist Editions

Above-counter sink

16¼" diameter x 6⅜"

K-14223-SP-G9



K-14218-SP-G9



K-14234-SP-G9



K-14223-SP-G9

## Serpentine Bronze

A Chinese bronze basin featuring turtles, fish and intertwining serpents and dating from 475 to 221 B.C.E. serves as the inspiration for Serpentine Bronze – a sink coveted for its warm, beautiful color combination. At first glance, the sink appears covered with an interesting scroll pattern, yet a closer look reveals the surprising, exotic serpentine heads. The matte and glossy surface on a Sandbar background gives this fresh design an aged appearance.





Caravan® collection Persia Artist Editions K-14223-SR2-0  
Purist® single-handle sink faucet K-14404-4A-PGD



**scenic** ['sēnik]

– adjective

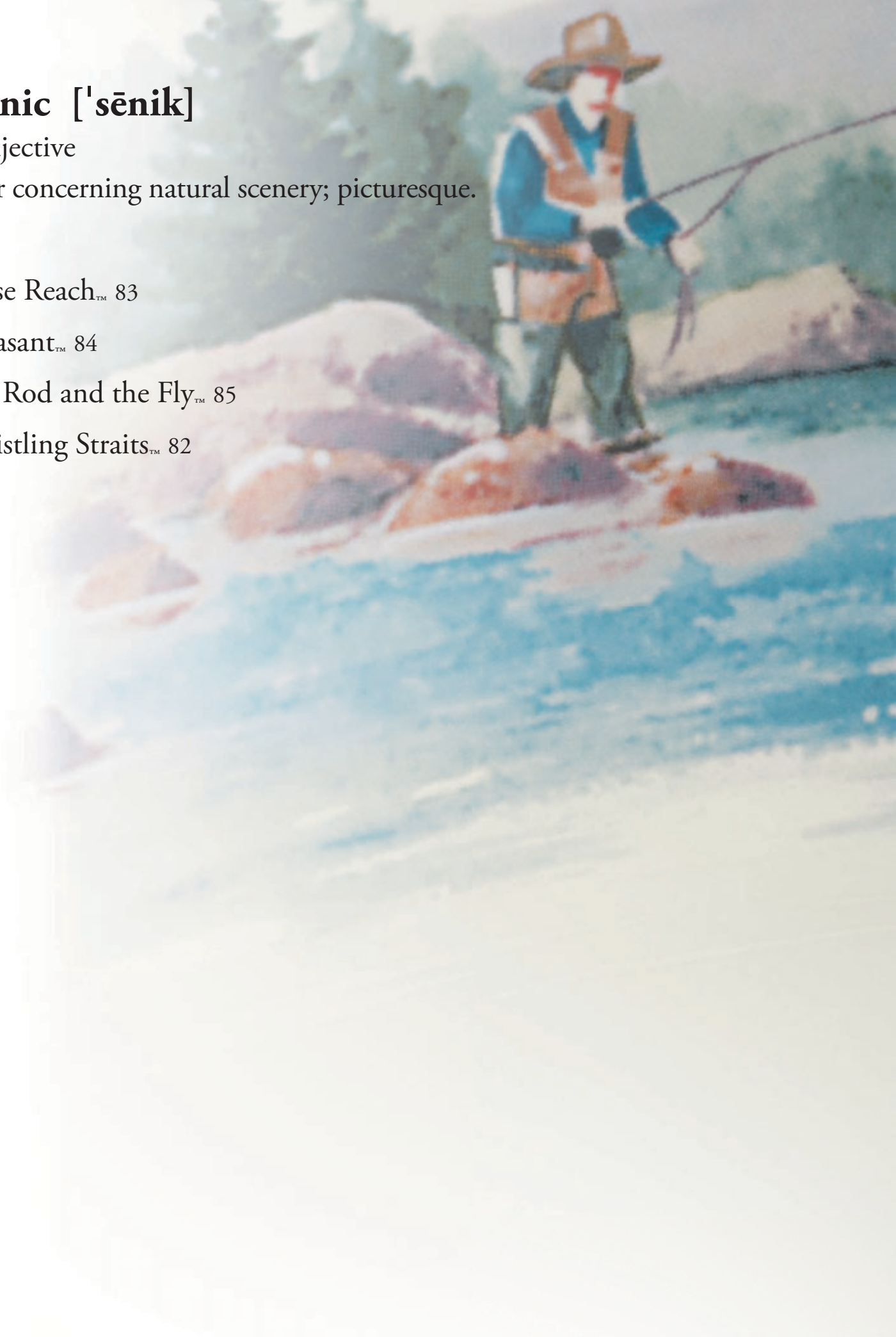
of or concerning natural scenery; picturesque.

Close Reach<sup>TM</sup> 83

Pheasant<sup>TM</sup> 84

The Rod and the Fly<sup>TM</sup> 85

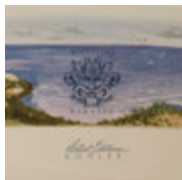
Whistling Straits<sup>TM</sup> 82











**Whistling Straits™**  
 Artist Editions  
 Drop-in sink  
 25" x 17" x 9"  
 K-14274-WS-47



K-14274-WS-47



K-14343-WS-47

## Whistling Straits

It's a brisk, early fall morning at the links-style Whistling Straits® golf course, where open, rugged and windswept terrain challenges golfers along the shore of Lake Michigan. Designed by Pete Dye, Whistling Straits makes a lasting impression for the many golf aficionados who visit Wisconsin to tee off each year. The Whistling Straits collection brings that lasting memory to the bathroom, illustrating the art of golf in the historic style of renowned late 19th-century British artist Douglas Adams.





**Close Reach™**  
 Artist Editions  
 Drop-in sink  
 22¾" x 18" x 8¾"  
 K-14229-SB-96



K-14226-SB-96



K-14231-SB-96

## Close Reach

You can almost hear the wind in the rigging as Close Reach captures the excitement of offshore yacht racing under a bracing, full-sail breeze. Named after a sailing term, the Close Reach design harkens back to turn-of-the-century racing yachts. The look of worn parchment and a hand-colored engraving, rendered on a Biscuit background, brings a sophisticated nautical theme to the bathroom.





**Pheasant™**  
 Artist Editions  
 Drop-in sink  
 24" x 15" x 8¼"  
 K-14272-P-96



K-260-PH-96



K-14218-P-96



K-14273-P-96

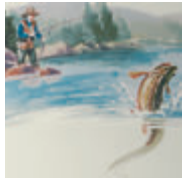


K-14239-PH-96

## Pheasant

On a crisp autumn afternoon, a hunter and his dog make their way through the woods, crunching fallen leaves with each step. Ahead they see a beautiful male pheasant with his colorful plume. Such a scene inspired numerous sketches circa 1900, when illustrations of nature graced the pages of popular publications including *Harper's Weekly*. Pheasant draws on this style of sketching, combining pheasant pairs with the basket-weave pattern of a creel.





**The Rod and the Fly™**  
Artist Editions  
Drop-in sink  
25" x 17" x 9"  
K-14274-RF-96



## The Rod and the Fly

K-14274-RF-96

A dry fly silently floats on the river's surface as nearby a rainbow trout glides through the water. The angler waits patiently, rod in hand. The Rod and the Fly conveys this scene of tranquility, where "the greatest pleasure is to be taken with deceiving the most difficult of fish." Soft colors define the contours of the river and recreate patterns of movement below the surface in this design.



# faucet ['fôsit]

– noun

a fixture for controlling the flow of liquid especially from a pipe.

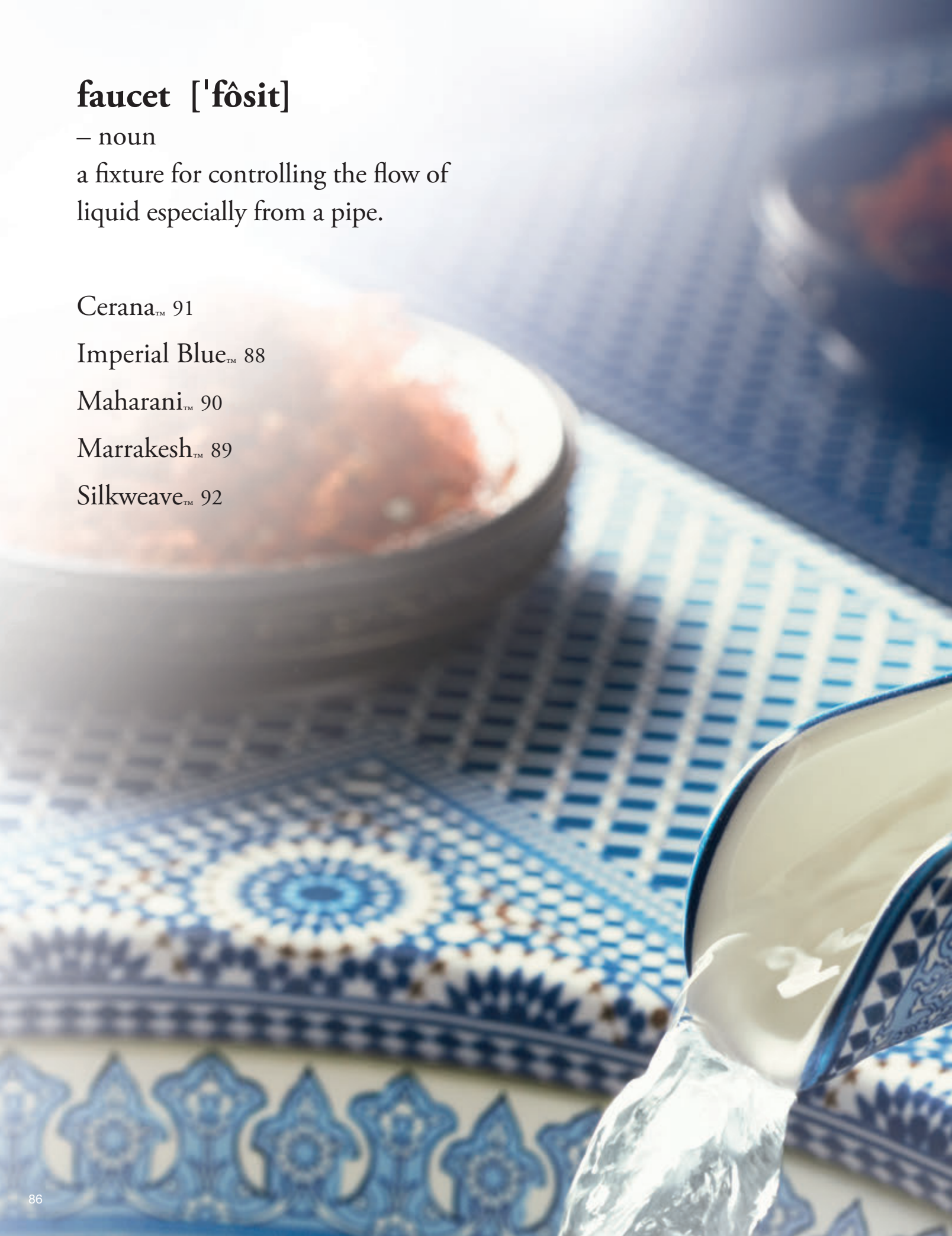
Cerana™ 91

Imperial Blue™ 88

Maharani™ 90

Marrakesh™ 89

Silkweave™ 92









Imperial Blue™  
Artist Editions  
K-11010-VB-0



K-14275-VB-0



K-14036-VB-0



K-14218-VB-0



K-14272-VB-0



K-14223-VB-0

## Imperial Blue

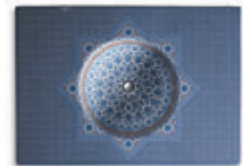
Inspired by a porcelain vase created during the Yung-lo reign of the Ming dynasty, the blue-and-white floral motif of the Imperial Blue design portrays traditional strength and wisdom. The pitcher-like Vas® ceramic faucet is topped by a unique handle resembling a drooping flower stem. Its clean lines and Imperial Blue pattern lead you to relaxation with the soothing sounds of flowing water.



Marrakesh™  
Artist Editions  
K-11000-BU-96



K-14046-BU-96



K-14033-BU-96/K-14046-BU-96

## Marrakesh

Named for the ancient capital of Morocco, the Marrakesh design was inspired by Moorish architecture. Marrakesh, the city, once served as a stop along a major trade route to the famous Timbuktu. The intricate and abstract floral pattern of Marrakesh is based on artwork found in mosques, and the classic Bol® single-handle faucet recalls the design of an antique water pump.



**Maharani™**  
Artist Editions  
K-11000-JB-96



K-14046-JB-96

## Maharani

Maharani is the feminine form of the Indian word *maharaja* and refers to a woman of power – an empress, princess or queen. Inspired by Indian culture, the Maharani sink and matching faucet are decorated with a special technique that creates raised ruby-like flowers and 24-carat gold tendrils. This classic Bol® single-handle faucet emerged from the design of an antique water pump.



Cerana™  
Artist Editions  
K-11010-VC-96



## Cerana

---

A rhythmic pattern of honeybees in flight, the Cerana design brings a touch of whimsical sophistication to the Vas® bathroom faucet. Rich browns and golds create a jewel-like tapestry, an interesting pairing with the faucet's fluid lines and single handle resembling a drooping flower stem. The unique design provides graceful water flow for a peaceful bathroom environment.



**Silkweave™**  
Artist Editions  
K-11010-VT-0



## Silkweave



K-11000-VT-0

Drawing inspiration from Japanese silkscreens, Silkweave flawlessly depicts an intricate geometric pattern with a delicate contrast of blue and white, highlighted with fine platinum threads. Available on both Vas® and Bol® faucets, Silkweave brings an interesting design element to a wide range of décors.







# kitchen ['kiCHən]

– noun

an area equipped for preparing food.

Alençon Lace<sup>™</sup> 102

Cursive<sup>™</sup> 96

Evenweave<sup>™</sup> 97

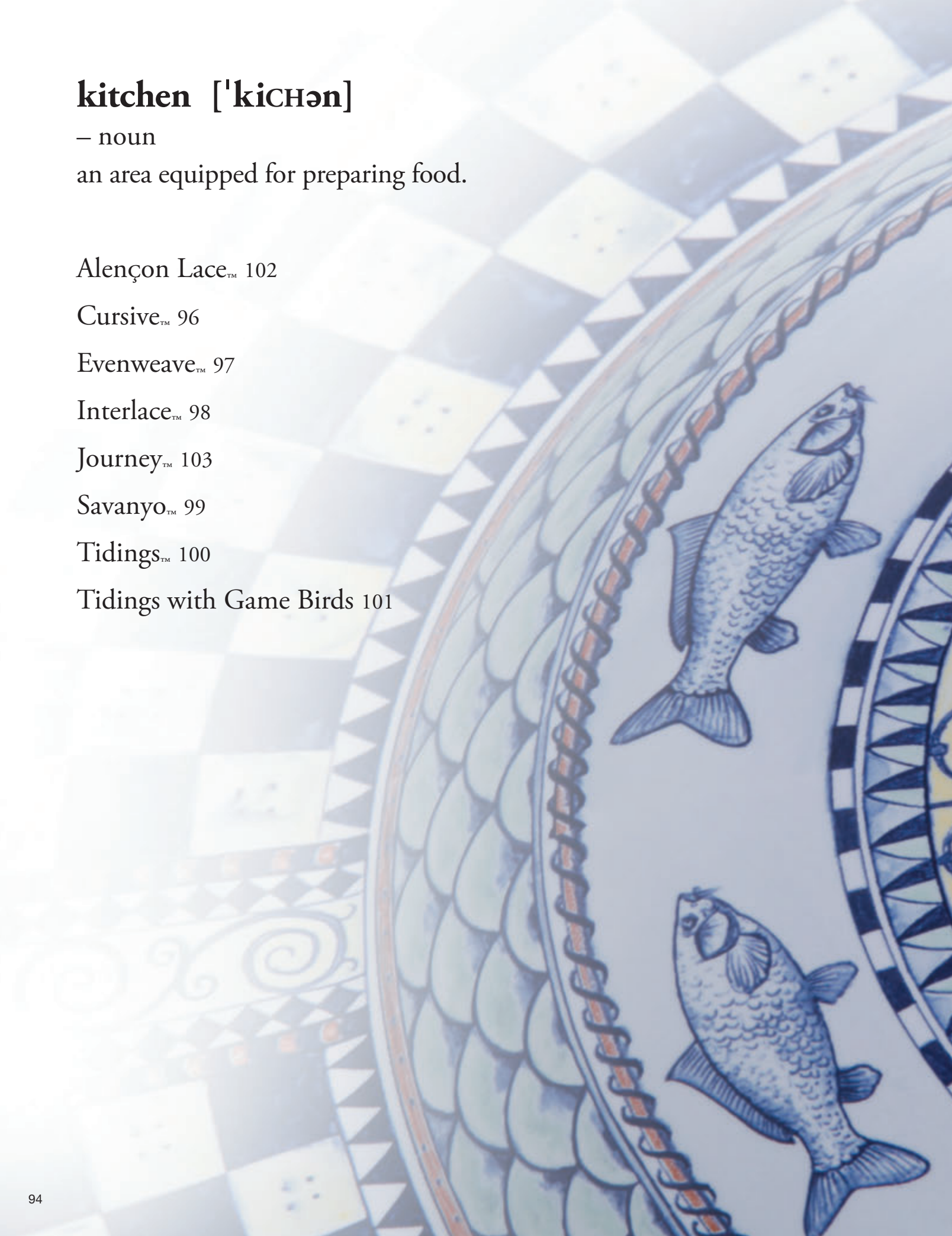
Interlace<sup>™</sup> 98

Journey<sup>™</sup> 103

Savanyo<sup>™</sup> 99

Tidings<sup>™</sup> 100

Tidings with Game Birds 101

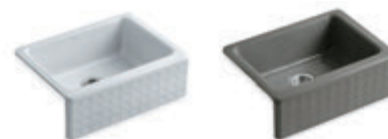








**Cursive™**  
Artist Editions  
Under-mount apron-front sink  
25" x 22" x 8"  
K-14572-T6-W2



Earthen  
White (W2)

Translucent  
Cashmere™ (K5)

## Cursive

With a distinctive layered pattern of circles reminiscent of handmade jewelry or chic, modern clothing, Cursive transforms the traditional apron-front sink into a clean and contemporary application. Its repeating, geometric pattern works well in eclectic kitchen designs or minimal modern spaces.



**Evenweave™**  
Artist Editions  
Under-mount apron-front sink  
25" x 22" x 8"  
K-14572-T3-K5



Earthen  
White (W2)



Translucent  
Cashmere™ (K5)

## Evenweave

---

From the soft, yet richly tactile feel of a worn leather jacket to the intricate weavings of knitted clothing, texture enhances appreciation of materials and design. Evenweave plays on our delight for natural materials and intricate artwork with a repeated dimensional quality. The translucent glaze highlights the carved texture.



**Interlace™**  
Artist Editions  
Under-mount apron-front sink  
25" x 22" x 8"  
K-14572-FC-0



## Interlace

Crafted of fireclay with a durable, glossy finish, Interlace looks deceptively delicate. Its intricate patterns, reflecting the late 19th-century revival of oriental motifs in architectural facades, have a handmade feel reminiscent of sewing, weaving or carving done by hand. The result is a lovely centerpiece for the kitchen, where handmade creations bring pleasure to the entire family.



## Savanyo™

Artist Editions

Under-mount apron-front sink

25" x 22" x 8"

K-14572-SV-W2



White (0)



Earthen White (W2)



Biscuit (96)

## Savanyo

Savanyo brings a touch of folk art to the kitchen with a repeating image commonly found in Hungarian pottery, embroidery and woodwork. The fluidity of the transparent glaze softens the edges of the color on the stylized country flowers, evoking the look and feel of handmade ware.



**Tidings™**  
Artist Editions  
Under-mount apron-front sink  
25" x 22" x 8"  
K-14572-T1-0



White (0)



Earthen White (W2)



Biscuit (96)

## Tidings

Envision a table set with decorated 19th-century dinnerware. It's the perfect balance between formal and inviting, a meal where vegetables from the garden and game from the hunt are shared with ease. Such is the inspiration for Tidings, a traditional sink with detailed relief carving. Tidings sets a serene and welcoming tone with its elegant artistry.



**Tidings™ with Game Birds**  
Artist Editions  
Under-mount apron-front sink  
25" x 22" x 8"  
K-14576-T2-0



White (0)

Earthen White (W2)

Biscuit (96)

## Tidings with Game Birds

Inspired by 19th-century dinnerware, Tidings with Game Birds evokes the history of the English pheasant hunt. With Victorian-style etched pheasant pictorials, the look is perfectly suited for English country décor.



**Alençon Lace™**

Artist Editions

Tile-in apron-front sink

33" x 22<sup>1</sup>/<sub>8</sub>" x 8<sup>1</sup>/<sub>4</sub>"

K-14580-KG-G9



Sandbar (G9)



Cashmere™ (K4)



Black Black™ (7)

## Alençon Lace

A bustling market town in the picturesque countryside of France, Alençon has been known for Alençon lace, or point d'Alençon, since the 17th century. The technique, which produces intricate, varied patterns, was preserved by a small group of Carmelite nuns, and today has become a coveted detail on wedding gowns. The Alençon Lace pattern on the Dickinson® single-bowl sink brings a graceful interlacing pattern reminiscent of this needlework to the kitchen.



## Journey™

Artist Editions

Wall-mount apron-front sink

24" x 22" x 17½"

K-14575-AJ-0



## Journey

---

Inspired by 17th-century Italian majolica – a richly colored, tin-glazed earthenware – Journey showcases naturalistically rendered barnyard fowl, herbaceous leaves and fruit on a White background. A playful, richly decorated sink ideal for country-influenced kitchens, Journey features a soft green-and-yellow checkerboard pattern on the bottom of the bowl.



Artist Editions Bathroom Product Index

| Name               | Page Number | Pedestal Sink                    | Drop-In Sink               | Under-Mount Sink*               | Above-Counter Sink          | Wall-Mount Sink      |
|--------------------|-------------|----------------------------------|----------------------------|---------------------------------|-----------------------------|----------------------|
| Floral             |             |                                  |                            |                                 |                             |                      |
| Botanical Study    | 46          |                                  | K-14272-BT<br>24" x 15"    | K-14275-BT<br>19¼" x 15½"       | K-14223-BT<br>16¼" Diameter |                      |
|                    |             |                                  |                            | K-14036-BT<br>16½" Diameter     |                             |                      |
|                    |             |                                  |                            | K-14218-BT<br>19¼" x 16½"       |                             |                      |
| Briar Rose         | 44          |                                  | K-14272-BR<br>24" x 15"    | K-14218-BR<br>19¼" x 16½"       |                             |                      |
| Crimson Topaz      | 42          | K-14226-TC<br>24" x 19½" x 34¾"  | K-14229-TC<br>22¼" x 18"   | K-14218-TC<br>19¼" x 16½"       |                             |                      |
| English Trellis    | 49          | K-14192-FL<br>27" x 19½" x 34"   | K-14176-FL<br>22½" x 18½"  | K-14195-FL<br>19¼" x 16½"       |                             |                      |
| Fables & Flowers   | 43          |                                  | K-14173<br>25¼" x 17"      | K-14193<br>19¼" x 16½"          |                             |                      |
| Garden Bandana     | 47          |                                  |                            |                                 | K-14223-GB<br>16¼" Diameter |                      |
| Peonies & Ivy      | 40          | K-14012-PS<br>23½" x 17½" x 34"  | K-14270-PS<br>25¼" x 17"   | K-14390-PS<br>19¼" x 16½"       |                             |                      |
| Prairie Flowers    | 41          | K-14269-WF<br>21¼" x 18¼" x 31½" | K-14271-WF<br>25¼" x 17"   | K-14218-WF<br>19¼" x 16½"       |                             |                      |
| Soliloquy          | 48          |                                  | K-14272-LY<br>24" x 15"    | K-14218-LY<br>19¼" x 16½"       |                             |                      |
| Tale of Briar Rose | 45          |                                  | K-14274-BR<br>25" x 17"    |                                 |                             |                      |
| Subtle             |             |                                  |                            |                                 |                             |                      |
| Bouclé Muslin      | 52          |                                  | K-2282-HW<br>21" x 20½"    | K-2349-HW<br>16½" x 15½"        | K-2200-HW<br>16¼" Diameter  |                      |
|                    |             |                                  | K-2282-1-HW<br>21" x 20½"  |                                 |                             |                      |
|                    |             |                                  | K-2282-10-HW<br>21" x 20½" |                                 |                             |                      |
| Bouclé Tweed       | 53          |                                  | K-2282-HV<br>21" x 20½"    | K-2349-HV<br>16½" x 15½"        | K-2200-HV<br>16¼" Diameter  |                      |
|                    |             |                                  | K-2282-1-HV<br>21" x 20½"  |                                 |                             |                      |
|                    |             |                                  | K-2282-10-HV<br>21" x 20½" |                                 |                             |                      |
| Garland            | 60          |                                  | K-14156<br>24" x 15"       | K-14273-G<br>23½" x 14¾"        |                             |                      |
| Ricochet           | 58          |                                  |                            | K-14280-C5 / -C6<br>19½" x 16½" |                             |                      |
| Tableau            | 61          |                                  |                            |                                 | K-14293<br>27" x 19"        | K-14293<br>27" x 19" |
| Tog & Thel         | 56          |                                  |                            | K-14046-KB<br>16½" x 15½"       |                             |                      |



\*Under-mount sink dimensions are overall product dimensions. Refer to installation instructions packed with sink for cutout dimensions.

| Countertop   | Toilet                   | Bidet      | Accessories              | Tile  | Faucet Insets & Skirts   | Faucet | Color Availability  |
|--|--------------------------|------------|--------------------------|---|--|--------|---|
|  |                          |            |                          |   |  |        | -0  |
|  | K-14239-BR               |            | K-14317-BR               | K-14203-BR  | K-258-BR, K-260-BR,<br>K-262-BR, K-264-BR                        |        | -96   |
|  | K-14231-TC               |            |                          |   | K-258-TC, K-274-TC,<br>K-262-TC, K-251-TC,<br>K-260-TC, K-264-TC |        | -0  |
|  | K-14247-FL<br>K-14261-FL | K-14245-FL | K-14209-FL<br>K-14181-FL | K-14203-FL<br>K-14205-FL<br>K-14207-FL / -FF / -FL                              | K-258-FL, K-260-FL,<br>K-262-FL, K-264-FL                        |        | -0  |
|  |                          |            |                          | K-14200-T / -TM / -TN / -TP<br>K-14201-TL, K-14202-TL<br>K-14205-TL, K-14206-TL | K-258-TL, K-260-TL,<br>K-262-TL, K-264-TL                        |        | -0  |
|  |                          |            |                          |   |  |        | -96   |
|  | K-14239-PS               |            |                          |   | K-258-PS<br>K-260-PS<br>K-262-PS                                 |        | -96   |
|  | K-14345-WF               |            | K-14181-WF               | K-14203-WF<br>K-14207-WF  | K-258-WF, K-260-WF,<br>K-262-WF, K-264-WF                        |        | -96   |
|  |                          |            |                          |   |  |        | -0  |
|  |                          |            |                          |   |  |        | -96   |
|  |                          |            |                          |   |  |        | N/A   |
|  |                          |            |                          |   |  |        | N/A   |
|  |                          |            |                          |   |  |        | -0 / -96 / -G9  |
|  |                          |            |                          |   |  |        | -0 / -K5 / -W2  |
|  |                          |            |                          |   |  |        | -0 / -7 / -47 / -FD /<br>-FE / -FF / -FT /<br>-KC / -KE / -KF / -KG |
| K-14031-KB<br>31" x 21 <sup>7</sup> / <sub>8</sub> " |                          |            |                          |   |  |        | N/A   |
| K-14032-KB<br>31" x 21 <sup>7</sup> / <sub>8</sub> " |                          |            |                          |   |  |        |   |
| K-14033-KB<br>31" x 21 <sup>7</sup> / <sub>8</sub> " |                          |            |                          |   |  |        |   |



## Artist Editions Bathroom Product Index Continued

| Name            | Page Number | Pedestal Sink | Drop-In Sink                    | Under-Mount Sink*                 | Above-Counter Sink           | Wall-Mount Sink |
|-----------------|-------------|---------------|---------------------------------|-----------------------------------|------------------------------|-----------------|
| Subtle          |             |               |                                 |                                   |                              |                 |
| Turnings        | 57          |               |                                 |                                   | K-2191 / -G<br>16¼" Diameter |                 |
| Twirl           | 59          |               |                                 | K-14287-H6 / -H7<br>16⅝" Diameter |                              |                 |
| Water's Grove   | 55          |               |                                 |                                   | K-14222-WG<br>16¼" Diameter  |                 |
| Water Lilies    | 54          |               | K-14282 / -12<br>21" x 20⅞"     |                                   |                              |                 |
| Metallic        |             |               |                                 |                                   |                              |                 |
| Empress Bouquet | 64          |               |                                 | K-14275-SMC<br>19¾" x 15⅝"        | K-14223-SMC<br>16¼" Diameter |                 |
|                 |             |               |                                 | K-14273-SMC<br>23⅞" x 14⅜"        |                              |                 |
| Flight of Fancy | 66          |               |                                 | K-14218-FG / -FP<br>19¼" x 16⅞"   |                              |                 |
| Laureate        | 67          |               | K-14174-PD / -PK<br>19¼" x 16¼" |                                   |                              |                 |
| Mille Fleurs    | 65          |               | K-14272-T9<br>24" x 15"         | K-14275-T9<br>19¾" x 15⅝"         | K-14223-T9<br>16¼" Diameter  |                 |
|                 |             |               |                                 | K-14036-T9<br>16⅞" Diameter       |                              |                 |
|                 |             |               |                                 | K-14218-T9<br>19¼" x 16⅞"         |                              |                 |
| Saree           | 68          |               |                                 | K-14260-S1<br>23⅞" x 15⅝"         |                              |                 |
|                 |             |               |                                 | K-14265-S1<br>19¾" x 15⅝"         |                              |                 |
|                 |             |               |                                 | K-14218-S1<br>19¼" x 16⅞"         |                              |                 |
| Global          |             |               |                                 |                                   |                              |                 |
| Imperial Blue   | 74          |               | K-14272-VB<br>24" x 15"         | K-14275-VB<br>19¾" x 15⅝"         | K-14223-VB<br>16¼" Diameter  |                 |
|                 |             |               |                                 | K-14036-VB<br>16⅞" Diameter       |                              |                 |
|                 |             |               |                                 | K-14218-VB<br>19¼" x 16⅞"         |                              |                 |
| Maharani        | 76          |               |                                 | K-14046-JB<br>16⅞" x 15⅝"         |                              |                 |
| Marrakesh       | 75          |               |                                 | K-14046-BU<br>16⅞" x 15⅝"         |                              |                 |
| Nepal           | 73          |               |                                 | K-14218-SR1<br>19¼" x 16⅞"        | K-14223-SR1<br>16¼" Diameter |                 |
| Global          |             |               |                                 |                                   |                              |                 |



\*Under-mount sink dimensions are overall product dimensions. Refer to installation instructions packed with sink for cutout dimensions.

| Countertop   | Toilet      | Bidet | Accessories                          | Tile                                 | Faucet Insets & Skirts | Faucet     | Color Availability                           |
|--|-------------|-------|--------------------------------------|--------------------------------------|------------------------|------------|--|
|  |             |       |                                      |                                      |                        |            | -0 / -7 / -47 / -96 / -G9 / -HW1 / -K4 / -W2 |
|  |             |       |                                      |                                      |                        |            | -0 / -W2 / -K5                               |
|  |             |       |                                      |                                      |                        |            | -0 / -W2 / -K5                               |
|  |             |       |                                      |                                      |                        |            | -0 / -W2                                     |
|  |             |       |                                      |                                      |                        |            |  |
|  | K-14338-SMC |       |                                      |                                      |                        |            | -0   |
|  |             |       |                                      |                                      |                        |            | -0   |
|  | K-14346-PD  |       | K-14181-PD / -PK<br>K-14317-PD / -PK | K-14203-PD / -PK<br>K-14204-PD / -PK |                        |            | -0   |
|  |             |       |                                      |                                      |                        |            | -47  |
|  |             |       |                                      |                                      |                        |            |  |
|  | K-14268-S1  |       |                                      |                                      |                        |            | -96  |
|  |             |       |                                      |                                      |                        |            |  |
|  |             |       |                                      |                                      |                        | K-11010-VB | -0   |
|  |             |       |                                      |                                      |                        | K-11000-JB | -96  |
| K-14031-BU<br>31" x 21 <sup>7</sup> / <sub>8</sub> " |             |       |                                      |                                      |                        | K-11000-BU | -96  |
| K-14032-BU<br>31" x 21 <sup>7</sup> / <sub>8</sub> " |             |       |                                      |                                      |                        |            |  |
| K-14033-BU<br>31" x 21 <sup>7</sup> / <sub>8</sub> " |             |       |                                      |                                      |                        |            |  |
|  |             |       |                                      |                                      |                        |            | -K7  |



Artist Editions Bathroom Product Index Continued

| Name                | Page Number | Pedestal Sink                   | Drop-In Sink             | Under-Mount Sink*               | Above-Counter Sink           | Wall-Mount Sink |
|---------------------|-------------|---------------------------------|--------------------------|---------------------------------|------------------------------|-----------------|
| Persia              | 72          |                                 |                          | K-14218-SR2<br>19¼" x 16⅞"      | K-14223-SR2<br>16¼" Diameter |                 |
| Serpentine Bronze   | 78          |                                 | K-14234-SP<br>17" x 14"  | K-14218-SP<br>19¼" x 16⅞"       | K-14223-SP<br>16¼" Diameter  |                 |
| Take Wing           | 77          |                                 |                          | K-14218-T4 / -T5<br>19¼" x 16⅞" |                              |                 |
| Scenic              |             |                                 |                          |                                 |                              |                 |
| Close Reach         | 83          | K-14226-SB<br>24" x 19¼" x 34⅜" | K-14229-SB<br>22¾" x 18" |                                 |                              |                 |
| Pheasant            | 84          |                                 | K-14272-P<br>24" x 15"   | K-14273-P<br>23⅞" x 14⅜"        |                              |                 |
|                     |             |                                 |                          | K-14218-P<br>19¼" x 16⅞"        |                              |                 |
| The Rod and the Fly | 85          |                                 | K-14274-RF<br>25" x 17"  |                                 |                              |                 |
| Whistling Straits   | 82          |                                 | K-14274-WS<br>25" x 17"  |                                 |                              |                 |

Artist Editions Kitchen Sink Index

| Name                    | Page Number | Dimensions       | Wall-Mount | Tile-In    | Under-Mount | Bottom Bowl Rack | White 0 | Biscuit 96 | Earthen White W2 | Almond 47 | Sandbar G9 | Cashmere K4 | Translucent Cashmere K5 | Black Black 7 |
|-------------------------|-------------|------------------|------------|------------|-------------|------------------|---------|------------|------------------|-----------|------------|-------------|-------------------------|---------------|
| Kitchen                 |             |                  |            |            |             |                  |         |            |                  |           |            |             |                         |               |
| Alençon Lace            | 102         | 33" x 22⅞" x 8¼" |            | K-14580-KG | K-14579-KG  | K-6062-ST        |         |            |                  |           |            | •           | •                       | •             |
| Cursive                 | 96          | 25" x 22" x 8"   |            | K-14571-T6 | K-14572-T6  | Included         |         |            | •                |           |            |             | •                       |               |
| Evenweave               | 97          | 25" x 22" x 8"   |            | K-14571-T3 | K-14572-T3  | Included         |         |            | •                |           |            |             | •                       |               |
| Interlace               | 98          | 25" x 22" x 8"   |            | K-14571-FC | K-14572-FC  | Included         | •       | •          | •                | •         | •          |             |                         |               |
| Journey                 | 103         | 24" x 22" x 17½" | K-14575-AJ |            |             | Included         | •       |            |                  |           |            |             |                         |               |
| Savanyo                 | 99          | 25" x 22" x 8"   |            | K-14571-SV | K-14572-SV  | Included         | •       | •          | •                |           |            |             |                         |               |
| Tidings                 | 100         | 25" x 22" x 8"   |            | K-14571-T1 | K-14572-T1  | Included         | •       | •          | •                |           |            |             |                         |               |
| Tidings with Game Birds | 101         | 25" x 22" x 8"   |            | K-14576-T2 | K-14577-T2  | Included         | •       | •          | •                |           |            |             |                         |               |

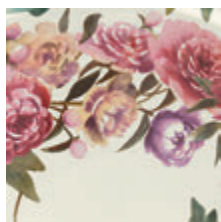


\*Under-mount sink dimensions are overall product dimensions. Refer to installation instructions packed with sink for cutout dimensions.

| Countertop | Toilet     | Bidet | Accessories | Tile | Faucet Insets & Skirts                       | Faucet | Color Availability |
|------------|------------|-------|-------------|------|--|--------|--------------------|
|            |            |       |             |      |  |        | -0                 |
|            |            |       |             |      |  |        | -G9                |
|            |            |       |             |      |  |        | -NA                |
|            |            |       |             |      |  |        |                    |
|            | K-14231-SB |       |             |      |  |        | -96                |
|            | K-14239-PH |       |             |      | K-258-PH<br>K-260-PH<br>K-262-PH<br>K-264-PH |        | -96                |
|            |            |       |             |      |  |        | -96                |
|            | K-14343-WS |       |             |      |  |        | -47                |
|            | K-14344-WS |       |             |      |  |        |                    |



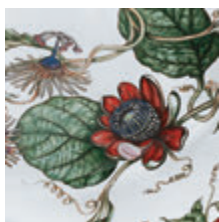
## Artist Editions Pattern Index



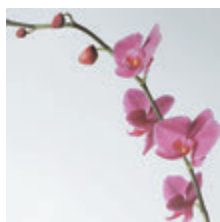
Peonies & Ivy™



Fables & Flowers™



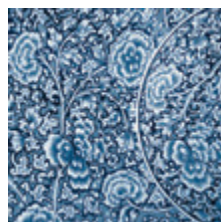
Crimson Topaz



Soliloquy™



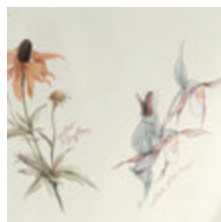
Botanical Study™



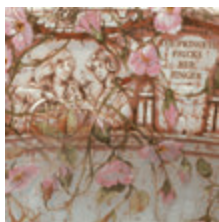
Garden Bandana™



English Trellis



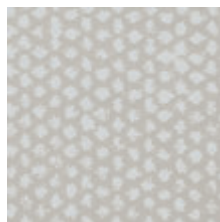
Prairie Flowers™



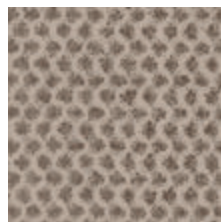
Tale of Briar Rose



Briar Rose



Bouclé Muslin™



Bouclé Tweed™



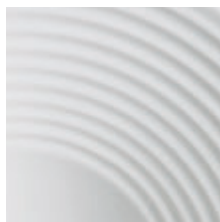
Water Lilies™



Water's Grove™



Tog & Thel™



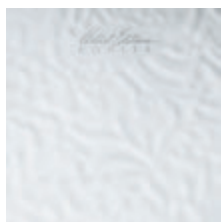
Turnings®



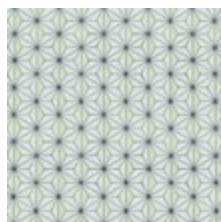
Ricochet®



Twirl®



Garland™



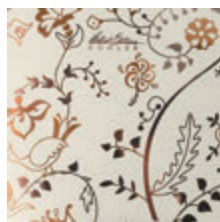
Silkweave™



Cerana™



Empress Bouquet™



Mille Fleurs™



Flight of Fancy™



Laureate™



Saree™



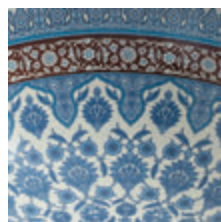
Nepal



Persia



Imperial Blue™



Marrakesh™



Maharani™



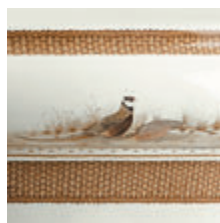
Take Wing™



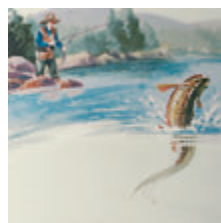
Serpentine Bronze™



Close Reach™



Pheasant™



The Rod and the Fly™



Artist Editions Pattern Index Continued



Whistling Straits™



Cursive™



Evenweave™



Interlace™



Savanyo™



Tidings™



Tidings with Game Birds

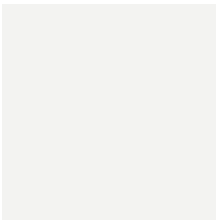


Alençon Lace™

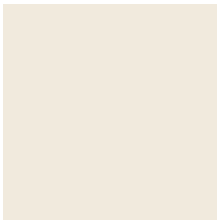


Journey™

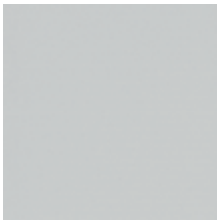
Color Index



White (0)



Biscuit (96)



Earthen White (W2)



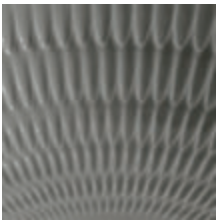
Almond (47)



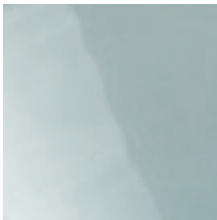
Sandbar (G9)



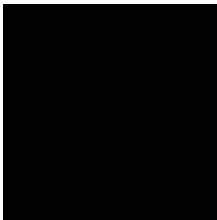
Cashmere (K4)



Translucent Cashmere (K5)



Translucent Blue (K7)



Black Black™ (7)



# Thank you.

If you'd like to learn more about Kohler and our complete product offering, we invite you to take a look at our literature, visit us online or stop by a KOHLER® Showroom.

## Literature

Concise and easy to use, our full-line category books inspire you to create beautiful spaces and guide you through choosing kitchen and bath products that are right for you and your home.

In addition, *bold* magazine features ideas we're passionate about, the latest introductions to the KOHLER kitchen and bath lines, as well as a selection of our timeless, classic offerings.

View the full magazine at [KOHLER.com/LiteratureStore](http://KOHLER.com/LiteratureStore). There you can download additional category books and brochures. KOHLER literature also can be ordered by calling 800-4-KOHLER.

## [us.KOHLER.com](http://us.KOHLER.com)

For design inspiration and tips, help planning your space, and a comprehensive look at KOHLER kitchen and bath products, visit us at [us.KOHLER.com](http://us.KOHLER.com).

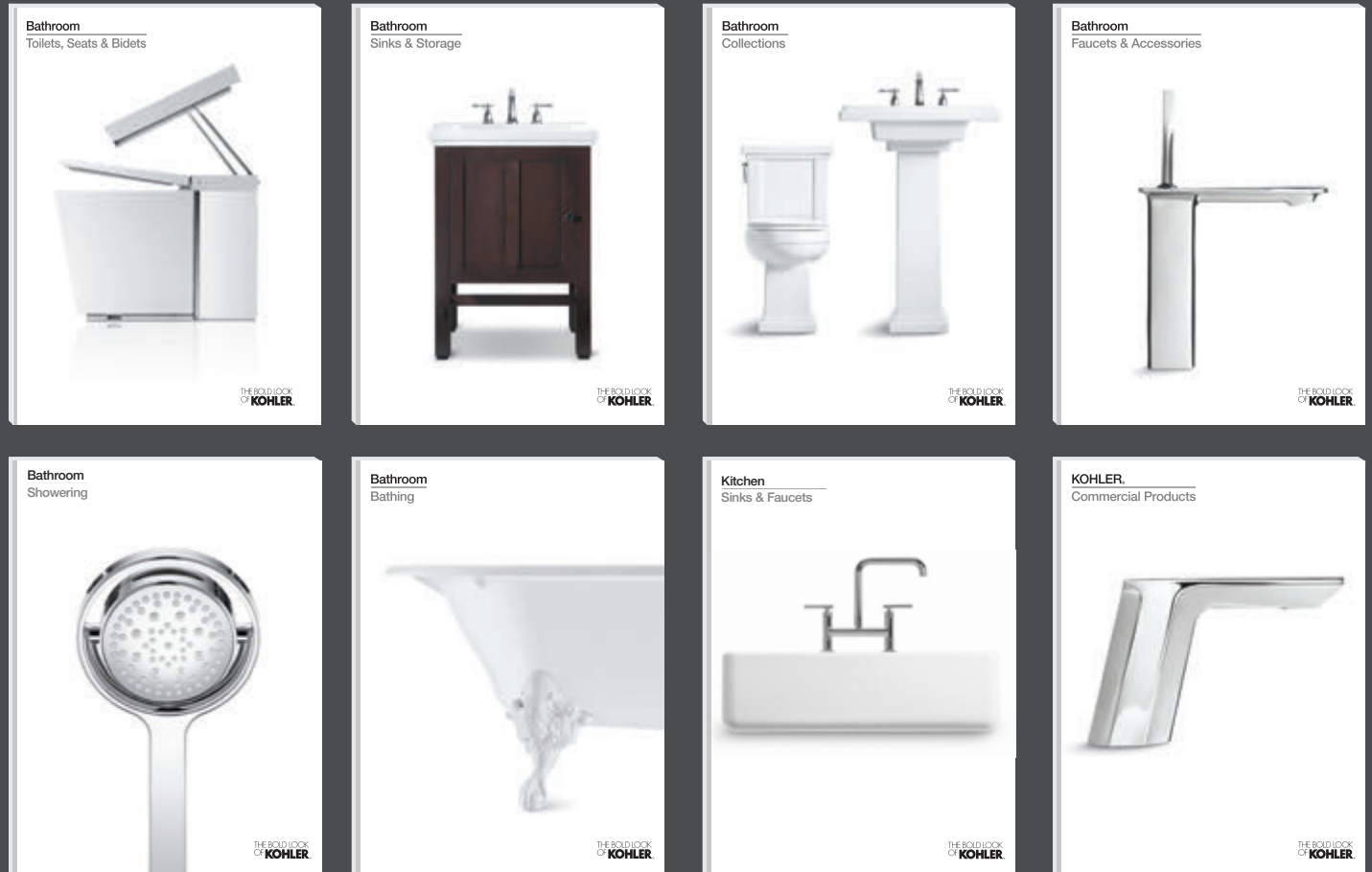
## Showrooms

To experience KOHLER kitchen and bath products firsthand and talk with a KOHLER representative, visit [KOHLER.com/WhereToBuy](http://KOHLER.com/WhereToBuy) to find a showroom near you.



# Kohler Invites You To Explore

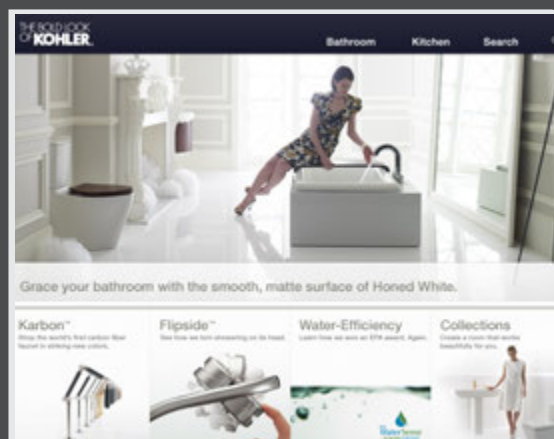
## Full-Line Category Books



***bold***

**KOHLER.com**

**Showrooms**





# Dedication to the Arts

---







As part of our commitment to innovation and design, Kohler's Arts/Industry program gives artists worldwide the opportunity to use industrial materials and equipment at Kohler's Pottery, Iron and Brass Foundries, and Enamel Shop. Artists are exposed to a body of technical knowledge that enables them to explore original forms and concepts and to undertake new ways of thinking and working.



## A KOHLER Experience®

---



Join us for an unforgettable stay at the Old Course Hotel in St Andrews, Scotland, or The American Club® in Kohler, Wisconsin, where you'll enjoy classically elegant settings, sumptuous cuisine, exclusive spa and golf experiences, luxurious amenities and quietly confident service. Plan your experience at [aKOHLEExperience.com](http://aKOHLEExperience.com).





A the  
American  
club®



INN ON  
WOODLAKE

JIGGER INN



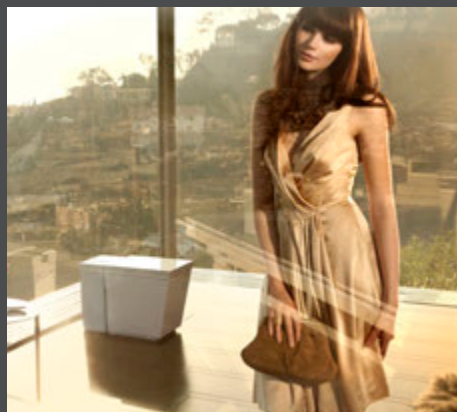
KOHLER  
Waters  
SPA®

AT THE OLD COURSE HOTEL  
& AT THE AMERICAN CLUB.



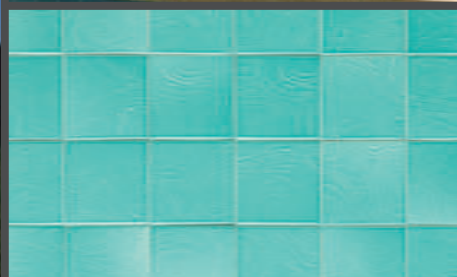
# The Kohler Family of Businesses

---



We are pleased to offer you additional resources as you design and furnish your home. In each of our businesses – kitchen and bath, tile and furniture, and residential generators – we are committed to designing innovative products that bring beauty and comfort to life. Discover the entire family of businesses at [KOHLER.com](http://KOHLER.com).





**KOHLER®**

KALLISTA.

ANN SACKS®

robern®

*Baker®*

M c G U I R E.

**STERLING**  
A KOHLER COMPANY

**KOHLER**  
POWER SYSTEMS





View the latest decorative  
kitchen and bath designs at  
[KOHLER.com/DecorativeProducts](http://KOHLER.com/DecorativeProducts).